


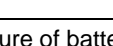






# PES100S

HYBRID ENERGY SYSTEM

## SPECIFICATION



PES100S Portable Hybrid Energy System					
Item		Unit	Data		
Frequency		Hz	50/60		
Voltage		AC V	380	400	415
140% Overload	Output power	kVA/kW	140/140	140/140	140/140
	Current	A	213	202	195
	Discharge duration@1C *	s	10	10	10
130% Overload	Output power	kVA/kW	130/130	130/130	130/130
	Current	A	198	188	181
	Discharge duration@1C *	s	60	60	60
Continuous output power		kVA/kW	100/100	100/100	100/100
Current		A	152	144	139
Charge/discharge duration@1C *		Hour	1	1	1
Max.charge power (AC Charger)		kW	30		
Phase		P	3		
Power factor		PF	1		
Dimensions		mm	2250x1350x2250		
Dry weight		kg	3452		
40' Loading		Qty	7		
Protection class			IP54		
Noise level		dBA@7m	58		
Wiring port			L1、L2、L3、N、PE		
Power connection input			AC socket: 3P/5W, 1x100kW, 30kW AC copper: 3P/4W, 100kW DC socket: 60kW		
Power connection output			AC socket: 3P/5W, 1x100kW AC socket: 1P, 1x16A; 3P, 1x32A AC copper: 3P/4W, 100kW		
Certification standards			 UN 38.3  IEC 62619  IEC / EN 60529  EN 61000-6-1/2/3/4  CE Declaration of Conformity  ISO  CE  IEC		

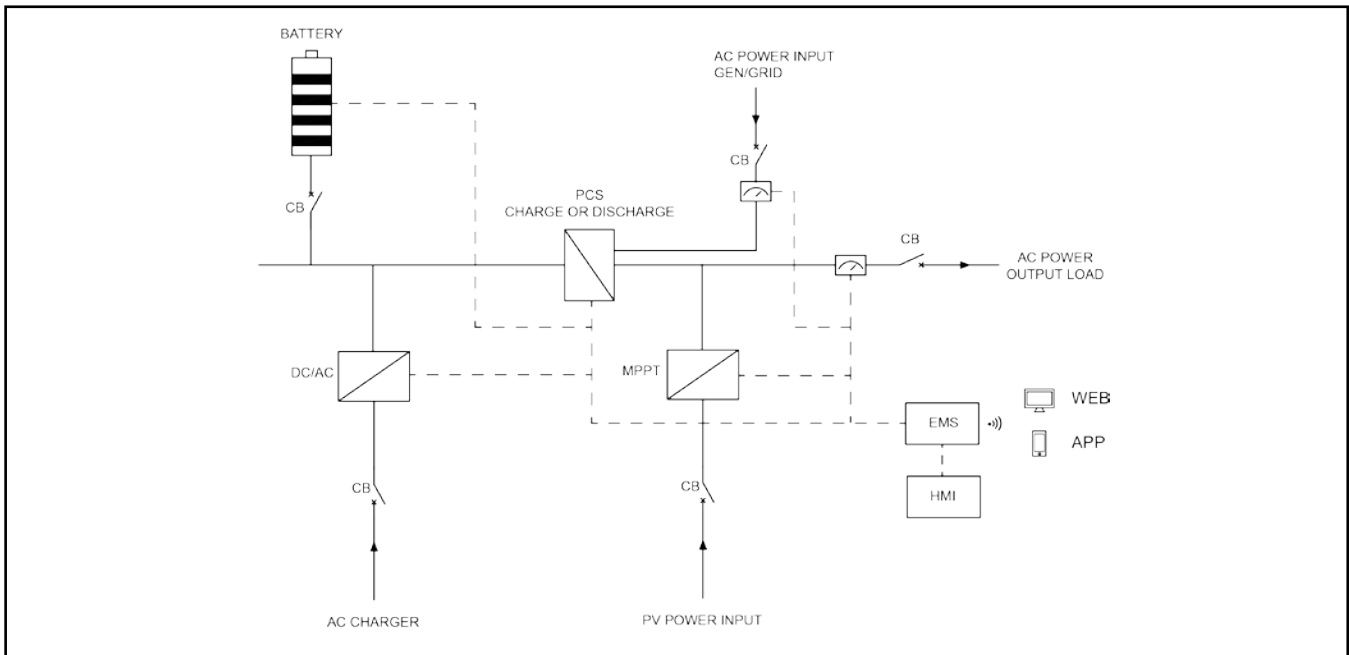
Classified Document  
2025.12.28

\* These data are based on standard test conditions: initial temperature of battery ≤30°C, SOC > 30%, AT ≤50°C.

### Intelligent Energy Management



## System Working Principle



DC/AC System		
Rated power	kVA/kW	130/130
Output voltage	AC V	380/400/415
Parallel / On-grid function		Parallel: <input checked="" type="checkbox"/> ; On-grid: <input checked="" type="checkbox"/>

PV System		
Rated power	kWp	60
Input voltage	DC V	200-1000
NOTE: Solar panels are optional.		

Battery System		
Battery type		LiFePO4
Battery capacity	kWh	124.8
Rated voltage	DC V	768
Cooling system		Air-cooled
Max charging rate		1C
Max discharging rate		1C
DOD (depth of discharge)		Default 80% (set via SOC)
NOTE: The discharge power decreases as the battery SOC decreases.		

Control System		
HMI control panel	inch	13.3" Touchscreen
Communication interface		WAN/WIFI/SIM
Cloud services		APP/WEB

\* Data is subject to change without prior notice as new products are always developed.  
Please contact POWERLINK or local agent with any doubts or for more information.

Classified  
Document  
2025.12.28